

***EQUIPMENT PARTS – DESIGNED WITH INTEGRITY, ENGINEERED TO LAST***

## **NEW JOHN DEERE PARTS - IN STOCK**



**PV6900**

Excavator Front Window Guard for Deere 120C, 120D, 135D, 160DLC, 200DLC, 225DLC, 240DLC, 270DLC, 350DLC, Hitachi Zaxis 135US-3, Zaxis 160LC-3, ZX-200LC-3, Zaxis 225US-3, Zaxis240LC-3, Zaxis 270LC-3, Zaxis 350LC-3 Excavator

- Made in the USA by PVE

## NEW CASE PARTS - IN STOCK



**87429970**

Transmission Charge Pump for Case 570MXT Ser.3, 570N EP, 570NXT, 575N EP, 580M Ser.2, 580M Ser.3, 580SM Ser.3, 580SM+ Ser.2, 580SM+ Ser.3, 580N, 580N EP, 580SN, 580SN WT, 580SV, 590SM Ser.2, 590SM Ser.3, 590SM+ Ser.3, 590SN Loader Backhoe, 586G Ser.3, 586H, 588G Ser.3, 588H Forklift-(All Models w/o PowerShift)



**429231A1**

Steering Knuckle, L/H for Case 570MXT, 570MXT Ser.3, 570N EP, 570NXT, 580M, 580M Ser.2, 580M Ser.3, 580N, 580N EP, 580SM, 580SM Ser.2, 580SM Ser.3, 580SM+ Ser.2, 580SM+ Ser.3, 580SN, 580SN WT, 590SM, 590SM Ser.2, 590SM Ser.3, 590SM+ Ser.3, Loader Backhoe, 585G, 585H, 586G, 586H, 588G, 588H Forklift



**3904374**

Fuel Pump for Case 550E Dozer, 855D Crawler Loader, 9020, 688C s/n 10501-, Excavator 621, W11B Wheel Loader, 780D, 580K s/n JJG0020000-, 580SK Loader Backhoe

# NEW CAT PARTS - IN STOCK



Angle Cylinder, with bushings for Cat D6K LGP, D6K XL Dozer

- Made in the USA by PVE

**269-2728**

---



Gear Coupling, 55T for Cat D3K, D3K2, D4K, D4K2, D5K, D5K2, D1 (XKF, XKL, XT3), D2 (XKM, XKR), D3 (XKW, XKY, XT3) Dozer

- Made in the USA by PVE

**244-1522**

---

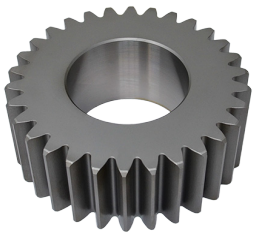


Sun Gear, 17T for Cat D3K, D3K2, D4K, D4K2, D5K, D5K2, and D1, D2, D3 (Next Gen Models) Dozer

- Made in the USA by PVE

**244-1516**

---



Planetary Gear, 30T for Cat D3K, D3K2, D4K, D4K2, D5K, D5K2, D1 Next Gen, D2 (XKM, XKR) Next Gen, D3 (XKW, XKY, XT3) Next Gen Dozer

- Made in the USA by PVE

**244-1518**

---



Planetary Gear, 44T for Cat D3K, D3K2, D4K, D4K2, D5K, D5K2, D1 Next Gen, D2 (XKM, XKR) Next Gen, D3 (XKW, XKY, XT3) Next Gen Dozer

- Made in the USA by PVE

**247-1459**

---

\*General model information only. For exact fitment check serial numbers prior to ordering.

## NEW CAT PARTS - IN STOCK



**7Y0223**

Planetary Shaft for Cat D3K, D3K2, D4K, D4K2, D5K, D5K2, D1 Next Gen, D2 (XKM, XKR) Next Gen, D3 (XKW, XKY, XT3) Next Gen Dozer, 315C, 315DL, 318B, 318C, 318EL, 319C, 319D, 319DL, 320L, 320B, 320BL, 320BN, 320C, 320C FM, 320D, 320D FM, 320D GC, 320DL, 320DL, 320DLN, 320DLRR, 320DRR, 320D2, 320D2GC, 320E, 320EL, 320ELN, 320ELRR, 320ERR, 320N, 321B, 321C, 321DLCR, 322L, 322LN, 322B, 322BL, 323DL, 323D2L, 323EL, 323FL, 325L, 325BL, 325BLN Excavator

- Made in the USA by PVE



**7Y0225**

Planetary Shaft for Cat D3K, D3K2, D4K, D4K2, D5K, D5K2, D1 Next Gen, D2 (XKM, XKR) Next Gen, D3 (XKW, XKY, XT3) Next Gen Dozer, 311C, 313D2, 315C, 315DL, 316EL, 316FL, 318B, 318BN, 318C, 318DL, 318D2, 318D2L, 319C, 319D, 319DL, 319DLN, 320L, 320A, 320AL, 320AN, 320B, 320BL, 320BLL, 320BN, 320C, 320CFM, 320D, 320DFM, 320DGC, 320DL, 320DLN, 320DLRR, 320DRR, 320D2, 320D2GC, 320D2L, 320E, 320EL, 320ELN, 320ELRR, 320N, 321B, 321C, 321DLCR, 322L, 322LN, 322A, 322B, 322BL, 322BLN, 322C, 322CFM, 322N, 323D, 323DL, 323DLN, 323D2L, 323EL, 323FL, 324D, 324DFM, 324DL, 324DLN, 324E, 324EL, 324ELN, 325L, 325LN, 325A, 325B, 325BL, 325C, 325CFM, 325CL, 325D, 325DFM, 325DL, 326DL, 326D2L, 326FL, 326FLN, 328DLCR, 329D, 329DL, 329DLN, 329D2L, 329E, 329EL, 329FL, 330D2L, 330F, 330FL, 330FLN, 365B, 365B2, 365BL, 365C, 365CL, 374DL, 374FL Excavator

- Made in the USA by PVE



**PV345**

Spring Assembly for Cat D3C (1PJ138-, 6PF145-, 7JF180-334, 8BF149-, 4HJ1-880, 5CJ1-1047, 5ZG1-57, 8DG1-147, 4HJ881-, 7JG150-, 4KS, 6SL1-2943, 5CJ1048-, 5ZG58-, 8DG148-, 7XL1-1107), D4C (1RJ636-, 2CJ126-429 Type 2, 2CJ430-, 7KG1-906, 9BG1-464, 4LS, 6BS, 6YL, 6SL1-889, 7KG907-, 9BG465-, 1FW, 8CS), D3G, D4G (FDC1-520, CFN1-1071, HYD, TLX) Dozer

- Made in the USA by PVE



**PV346**

Spring Assembly for Cat D3B (27Y, 24Y), D3C (1PJ1-137, 6PF1-144, 7JF1-179, 8BF1-148), D4C (1RJ1-635, 2CJ1-125, 2CJ126-429 Type 1) Dozer

- Made in the USA by PVE

\*General model information only. For exact fitment check serial numbers prior to ordering.

---

## NEW BOBCAT PARTS - IN STOCK

---



**6676728**

Muffler for Bobcat 773 (s/n 500K11001-, 519011001-, 519211001-), S150 (s/n 524011001-, 524111001-), S160 (s/n 524011001-, 524111001-), S175 (s/n 519028001-, 519215001), S185 (s/n 519028001- 519215001-), T190 (s/n 519311001- 519411001-, 527011001-) Skid Steer/Compact Track Loader



**6683915**

Muffler for Bobcat S150 (s/n 526611001-, 526711001), S160 (s/n 526611001-, 526711001-, 529911001-, 526811001-), S175 (s/n 525011001-, 525111001-), S185 (s/n 525011001- 525111001-, 530311001- 530411001), S205 (s/n 528411001- 528511001-, 530511001- 530611001-), T180 (s/n 524211001- 527511001- 527611001-, 531411001-, 531511001-), T190 (s/n 527011001-, 527911001-, 531611001- 531711001-, 527711001-, 527811001-) Skid Loader/Compact Track Loader